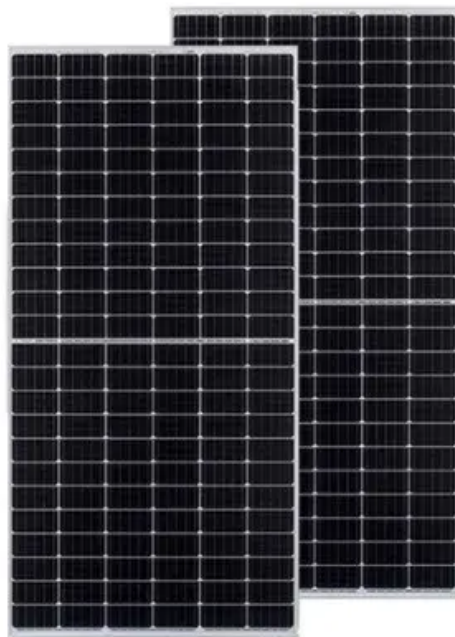


NKOSITHANDILEB SOLAR

The weight of solar panels on the roof



Overview

How much do solar panels weigh on a roof?

Installed solar panels typically weigh around 2–4 lb (0.91–1.81 kg) per 1 sq ft (930 cm²), which—if the panels are installed properly so the load is evenly distributed—is typically manageable for a roof in good condition. Consult a structural engineer if you have any concerns about your roof's capability to support solar panels.

How much do commercial solar panels weigh?

Commercial solar panels weigh around 50 pounds. Frames and mounting equipment for both panels weigh about the same amount. It is also important to consider the weight of installing solar panels on your rooftop. On average, mounting equipment and solar panels weigh two to four pounds per square foot.

How much weight can a solar roof support?

In fact, a shingled roof should be able to support 20 pounds per square foot and a clay tile or metal roof should support 27 pounds per square foot. With most solar panels distributing 40–45 pounds of weight across 18 square feet (about 2.5 pounds per square foot), your roof should be able to easily support an entire solar system.

The weight of solar panels on the roof

Installed solar panels typically weigh around 2-4 lb (0.91-1.81 kg) per 1 sq ft (930 cm²), which--if the panels are installed properly so the load is evenly distributed--is typically manageable for a roof in good condition. Consult a structural engineer if you have any concerns about your roof's capability to support solar panels.

Commercial solar panels weigh around 50 pounds. Frames and mounting equipment for both panels weigh about the same amount. It is also important to consider the weight of installing solar panels on your rooftop. On average, mounting equipment and solar panels weigh two to four pounds per square foot.

In fact, a shingled roof should be able to support 20 pounds per square foot and a clay tile or metal roof should support 27 pounds per square foot. With most solar panels distributing 40-45 pounds of weight across 18 square feet (about 2.5 pounds per square foot), your roof should be able to easily support an entire solar system.

Introduction Solar Panel Size, Weight & Wattage Standard residential solar panels are typically around 5.8 feet long by 3.5 feet wide ...

Solar panels have become a popular choice for homeowners looking to reduce energy costs and support environmental sustainability. However, one common concern is the ...

As solar panels become a popular choice for UK homeowners looking to reduce energy bills and embrace renewable energy, ...

Key Takeaways Most standard residential solar panels weigh 35-50 lbs That's about 2.5 to 4 lbs per square foot on your roof Monocrystalline and polycrystalline panels ...

The increasing demand for sustainable energy solutions led many homeowners to consider the installation of solar panels. While the ...

The weight of solar panels on a roof is a critical factor in system design, safety, and long-term performance. This article explains typical panel weights, how roof loading is ...

Investing in solar power is an efficient way to reduce electricity costs and carbon footprint. One of the most important considerations for homeowners is the weight of solar ...

Key Takeaways Most standard residential solar panels weigh 35-50 lbs That's about 2.5 to 4 lbs per square foot on your roof ...

By construction standards, the weight solar panels add to your roof usually isn't a cause for concern. The average residential PV panel measures about 65 inches by 39 inches. ...

The increasing demand for sustainable energy solutions led many homeowners to consider the installation of solar panels. While the benefits are appealing, one common ...

By construction standards, the weight solar panels add to your roof usually isn't a cause for concern. The average residential PV panel ...

Solar panels add valuable energy to homes, but their weight matters for roof integrity. This article explains typical panel weights, how mounting hardware contributes to ...

Worried about solar panel weight on your roof? Discover the facts to ensure your home is solar-ready without structural concerns.

As solar panels become a popular choice for UK homeowners looking to reduce energy bills and embrace renewable energy, understanding their weight and the implications ...

Introduction Solar Panel Size, Weight & Wattage Standard residential solar panels are typically around 5.8 feet long by 3.5 feet wide and weigh between 40 to 50 pounds. ...

Contact Us

For catalog requests, pricing, or partnerships, please contact:

NKOSITHANDILEB SOLAR

Phone: +27-11-934-5771

Email: info@nkosithandileb.co.za

Website: <https://nkosithandileb.co.za>

Scan QR code to visit our website:

