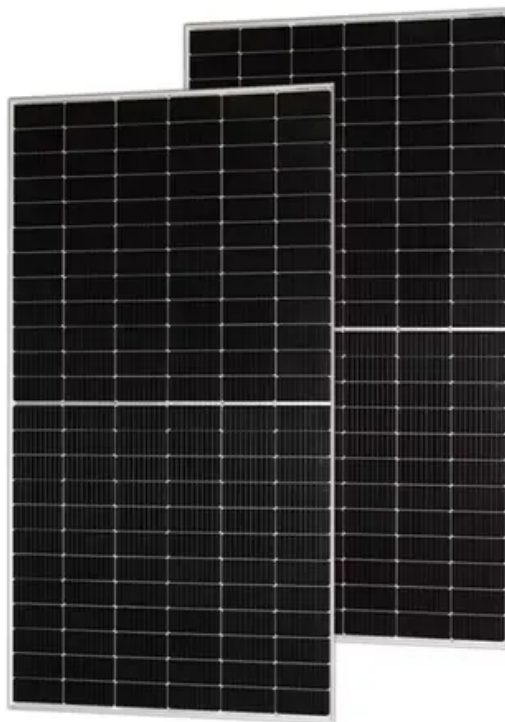


NKOSITHANDILEB SOLAR

Solar inverter exclamation mark



Overview

What are solar inverter error codes?

Understanding solar inverter error codes is crucial because they provide specific indications of issues that might be affecting your system's performance. Among the most common problems highlighted by these codes are connectivity issues, temperature spikes, grid disturbances, and incorrect power inputs.

What does error code E01 mean on a solar inverter?

Often, with a bit of troubleshooting knowledge, home and property owners can resolve these issues without needing extensive professional intervention, thus keeping their solar energy systems operating efficiently. Error code E01 is frequently encountered and typically signifies an overvoltage condition within your solar inverter system.

Why is my inverter displaying an error message or code?

If your inverter displays an error message or code, refer to your user manual for a detailed explanation and recommended actions. Common issues might include:

- Grid Disturbance: Issues with utility power affecting inverter operation.
- High/Low Voltage: The input voltage from the panels is outside the normal operating range.

Does your solar inverter have a cryptic error code?

Picture this: your solar power system is humming smoothly, generating clean energy and reducing your electricity bills. Suddenly, a series of cryptic error codes appears on your solar inverter, leaving you wondering whether they'll threaten the efficiency of your investment.

Solar inverter exclamation mark

Understanding solar inverter error codes is crucial because they provide specific indications of issues that might be affecting your system's performance. Among the most common problems highlighted by these codes are connectivity issues, temperature spikes, grid disturbances, and incorrect power inputs.

Often, with a bit of troubleshooting knowledge, home and property owners can resolve these issues without needing extensive professional intervention, thus keeping their solar energy systems operating efficiently. Error code E01 is frequently encountered and typically signifies an overvoltage condition within your solar inverter system.

If your inverter displays an error message or code, refer to your user manual for a detailed explanation and recommended actions. Common issues might include:

- o Grid Disturbance: Issues with utility power affecting inverter operation.
- o High/Low Voltage: The input voltage from the panels is outside the normal operating range.

Picture this: your solar power system is humming smoothly, generating clean energy and reducing your electricity bills. Suddenly, a series of cryptic error codes appears on your solar inverter, leaving you wondering whether they'll threaten the efficiency of your investment.

Learn how to reset inverter faults, understand solar inverter fault codes, and troubleshoot solar inverter errors in home solar systems.

Learn how to effectively troubleshoot overvoltage issues indicated by Error E01, ensuring safety and efficiency. Equip yourself with ...

The table below lists inverter error codes you may see on your solar system. You will

notice that a lot of the codes are due to grid voltage variations which the inverter responds to.

This guide will help you decipher the common symbols, numbers, and messages you might encounter on a typical solar inverter display, ensuring you can effectively manage ...

Inverter error codes are designed to provide specific information about malfunctions. These codes typically fall into several ...

Learn how to reset inverter faults, understand solar inverter fault codes, and troubleshoot solar inverter ...

Error Messages or Warning Lights on the Display: If the inverter shows error codes, warning lights, or blinking indicators, it usually ...

Error Messages or Warning Lights on the Display: If the inverter shows error codes, warning lights, or blinking indicators, it usually means there is a fault that needs attention. ...

Learn how to identify and repair common solar inverter faults like overcurrent, undervoltage, islanding, overheating, and faulty communication.

Solar inverter error codes are a crucial part of maintaining and troubleshooting solar energy systems. These codes are displayed on the inverter to help diagnose and resolve ...

Discover the causes, symptoms, and expert repair methods for solar inverter faults. Step-by-step solutions for IGBT, capacitor, SPD, driver, and power supply failures.

Inverter error codes are designed to provide specific information about malfunctions. These codes typically fall into several categories, each pointing to a different ...

Solar inverter problems can cause performance dips, system outages, and even long-term damage to your setup if left unaddressed. In this article, we'll break down the most ...

This guide will help you decipher the common symbols, numbers, and messages you might encounter on a typical solar inverter ...

Learn how to effectively troubleshoot overvoltage issues indicated by Error E01, ensuring safety and efficiency. Equip yourself with practical DIY strategies for addressing ...

Contact Us

For catalog requests, pricing, or partnerships, please contact:

NKOSITHANDILEB SOLAR

Phone: +27-11-934-5771

Email: info@nkosithandileb.co.za

Website: <https://nkosithandileb.co.za>

Scan QR code to visit our website:

