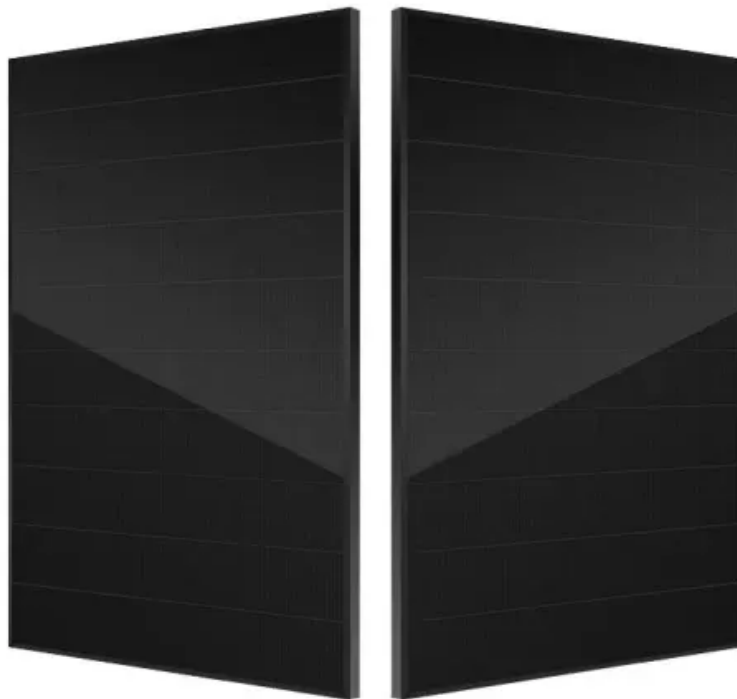


**NKOSITHANDILEB SOLAR**

# **How to connect the power supply of solar container lithium battery station cabinet modification**



## Overview

---

How to protect a lithium battery energy storage cabinet?

At the same time, setting the charging and discharging parameters, configuring the safety and protection settings, and protecting the lithium battery energy storage cabinet from potential dangers such as overcurrent, overvoltage, and overtemperature are necessary.

How do you connect solar panels to a battery system?

How you connect solar panels to battery systems depends on your voltage requirements: Series wiring adds voltages while maintaining the same current. Connect the positive terminal of one panel to the negative terminal of the next. This configuration works well for MPPT controllers and higher system voltages.

What type of batteries are used in energy storage cabinets?

Lithium batteries have become the most commonly used battery type in modern energy storage cabinets due to their high energy density, long life, low self-discharge rate and fast charge and discharge speed.

How can a solar panel to battery system provide energy independence?

Your journey toward energy independence starts with proper planning and execution. Take time to understand your specific needs, select quality components, and follow proven installation procedures. With careful attention to safety and proper maintenance, your solar panel to battery system will provide reliable, clean energy for decades to come.

## How to connect the power supply of solar container lithium battery

---

At the same time, setting the charging and discharging parameters, configuring the safety and protection settings, and protecting the lithium battery energy storage cabinet from potential dangers such as overcurrent, overvoltage, and overtemperature are necessary.

How you connect solar panels to battery systems depends on your voltage requirements: Series wiring adds voltages while maintaining the same current. Connect the positive terminal of one panel to the negative terminal of the next. This configuration works well for MPPT controllers and higher system voltages.

Lithium batteries have become the most commonly used battery type in modern energy storage cabinets due to their high energy density, long life, low self-discharge rate and fast charge and discharge speed.

Your journey toward energy independence starts with proper planning and execution. Take time to understand your specific needs, select quality components, and follow proven installation procedures. With careful attention to safety and proper maintenance, your solar panel to battery system will provide reliable, clean energy for decades to come.

Step-by-step lithium battery wiring for safe series, parallel, and series-parallel banks. Build 48V from 12V, size cables and fuses, cut ...

Learn how to safely connect solar panels to batteries with our expert step-by-step guide. Includes wiring diagrams, safety tips, and ...

Learn how to safely connect solar panels to batteries with our expert step-by-step guide.

Includes wiring diagrams, safety tips, and troubleshooting advice.

In off-grid business use, a Solar PV Energy Storage box represents an autonomous power solution that has photovoltaic (PV) arrays, storage batteries, inverters, and ...

Choose the correct installation location for your lithium battery energy storage cabinet  
First of all, we must determine the environmental ...

This article will introduce in detail how to design an energy storage cabinet device, and focus on how to integrate key components such as PCS (power conversion system), EMS ...

Discover the essentials of wiring batteries for solar energy systems in this comprehensive guide. Learn about various battery types, crucial specifications like capacity ...

Learn how to safely install and configure your LiFePO4 battery system. This complete guide covers wiring, parallel/series connections, safety, and ...

In off-grid business use, a Solar PV Energy Storage box represents an autonomous power solution that has photovoltaic (PV) ...

Innovations in battery chemistry, such as the development of solid-state batteries and improvements in lithium-ion technology, are expected to increase energy density, reduce ...

Choose the correct installation location for your lithium battery energy storage cabinet  
First of all, we must determine the environmental conditions of the installation site to ...

Step-by-step lithium battery wiring for safe series, parallel, and series-parallel banks.

Build 48V from 12V, size cables and fuses, cut heat, and commission.

Container Battery Energy Storage systems connect to existing power infrastructure through professionally installed cabling and protection devices, with certified electricians ...

Learn how to safely install and configure your LiFePO4 battery system. This complete guide covers wiring, parallel/series connections, safety, and troubleshooting.

Utility-scale BESS system description -- Figure 2. Main circuit of a BESS Battery storage systems are emerging as one of the potential solutions to increase power system ...

## Contact Us

---

For catalog requests, pricing, or partnerships, please contact:

### **NKOSITHANDILEB SOLAR**

Phone: +27-11-934-5771

Email: [info@nkosithandileb.co.za](mailto:info@nkosithandileb.co.za)

Website: <https://nkosithandileb.co.za>

*Scan QR code to visit our website:*

