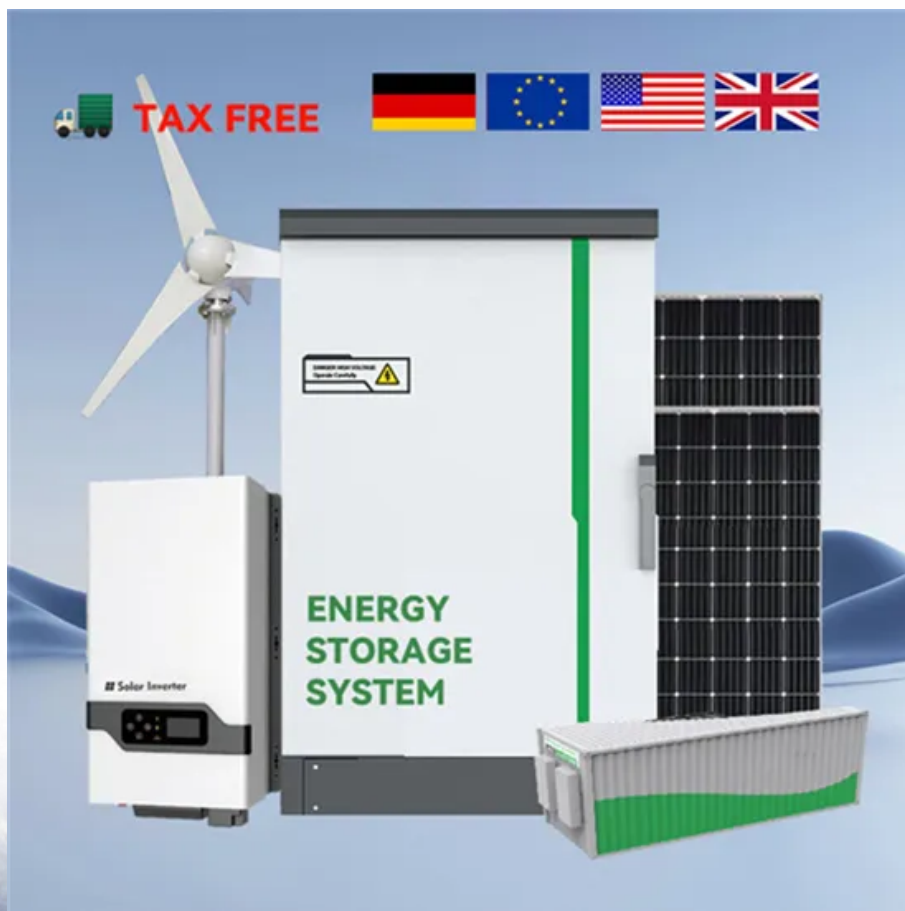


# **5g solar container communication station inverter grid-connected equipment bu introduction**



## Overview

---

What is a 5G base station energy storage device?

During main power failures, the energy storage device provides emergency power for the communication equipment. A set of 5G base station main communication equipment is generally composed of a baseband BBU unit and multiple RF AAU units. Equation 1 serves as the base station load model:.

What equipment is used in a 5G base station?

AAU is the most energy-consuming equipment in 5G base stations, accounting for up to 90% of their total energy consumption. Auxiliary equipment includes power supply equipment, monitoring and lighting equipment. The power supply equipment manages the distribution and conversion of electrical energy among equipment within the 5G base station.

What is the load of a 5G base station?

The load of a 5G base station primarily consists of communication equipment and auxiliary components. The communication equipment mainly includes Active Antenna Unit (AAU) and Base Band Unit (BBU). AAU is a combination of radio frequency unit and antenna array of 5G base station.

What is a 5G power supply?

The power supply equipment manages the distribution and conversion of electrical energy among equipment within the 5G base station. During main power failures, the energy storage device provides emergency power for the communication equipment.

## 5g solar container communication station inverter grid-connected e

---

During main power failures, the energy storage device provides emergency power for the communication equipment. A set of 5G base station main communication equipment is generally composed of a baseband BBU unit and multiple RF AAU units. Equation 1 serves as the base station load model:

AAU is the most energy-consuming equipment in 5G base stations, accounting for up to 90% of their total energy consumption. Auxiliary equipment includes power supply equipment, monitoring and lighting equipment. The power supply equipment manages the distribution and conversion of electrical energy among equipment within the 5G base station.

The load of a 5G base station primarily consists of communication equipment and auxiliary components. The communication equipment mainly includes Active Antenna Unit (AAU) and Base Band Unit (BBU). AAU is a combination of radio frequency unit and antenna array of 5G base station.

The power supply equipment manages the distribution and conversion of electrical energy among equipment within the 5G base station. During main power failures, the energy storage device provides emergency power for the communication equipment.

The charging and discharging actions of energy storage meet the requirements of various 5G base stations for microgrid power backup. During the low electricity price period, ...

This large-capacity, modular outdoor base station seamlessly integrates photovoltaic, wind power, and energy storage to provide a stable DC48V power supply and optical distribution. Perfect ...

The 5G BBU is the baseband processing unit of the SageRAN`s XLink(TM) 5G distributed small cell solution. It is a small and low-power indoor distributed small base station ...

An Introduction to 5G and How MPS Products Can Optimize a Base Station's AAU and BBU Introduction 5G is a cellular network technology that is often referred to in ...

Grid-connected photovoltaic inverters: Grid codes, topologies and With the development of modern and innovative inverter topologies, efficiency, size, weight, and ...

During main power failures, the energy storage device provides emergency power for the communication equipment. A set of 5G base station main communication equipment is ...

It reduces energy consumption, saving electricity charges and rent. Hybrid power: On the basis of 5G power platform, solar power is smoothly introduced. In areas with good ...

Communication Base Station Inverter Dec 14, & ensp;& #;& ensp;Power conversion and adaptation: The inverter converts DC power (such as batteries or solar panels) into AC ...

A set of 5G base station main communication equipment is generally composed of a baseband BBU unit and multiple RF AAU units. Equation 1 serves as the base station load model:.

During main power failures, the energy storage device provides emergency power for the communication equipment. A set of 5G ...

A 5G base station primarily consists of the Baseband Unit (BBU) and the Active Antenna Unit (AAU). We note that the energy consumption of the BBU remains relatively ...

## Contact Us

---

For catalog requests, pricing, or partnerships, please contact:

### **NKOSITHANDILEB SOLAR**

Phone: +27-11-934-5771

Email: [info@nkosithandileb.co.za](mailto:info@nkosithandileb.co.za)

Website: <https://nkosithandileb.co.za>

*Scan QR code to visit our website:*

